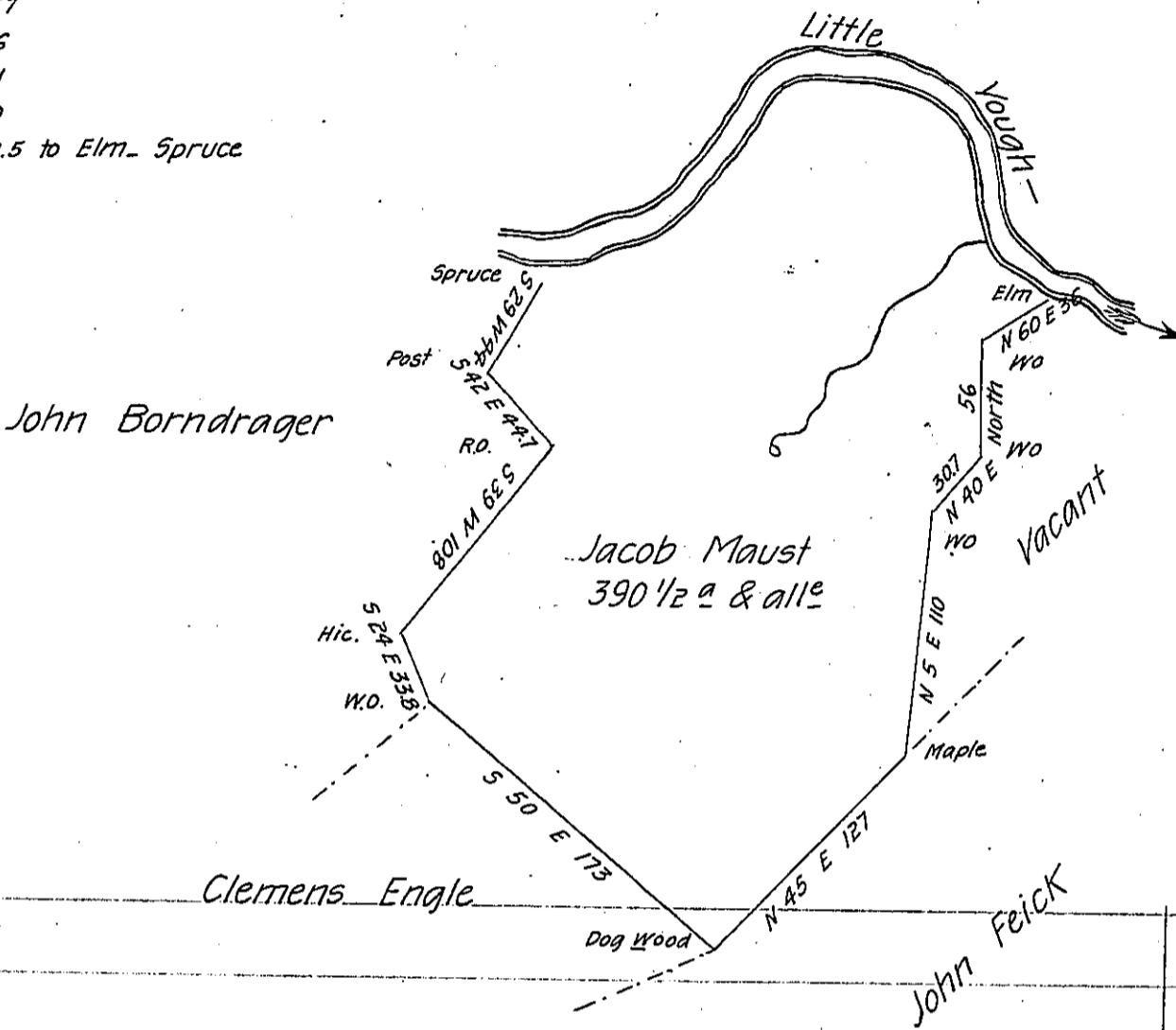


*Courses and distances
up the river.*

- N 54 W 40
- N 10 W 57
- N 72 W 16
- N 89 W 71
- S 25 W 40
- S 60 W 92.5 to Elm - Spruce



Situated on the south side of Little Yough-River including his improvement in Elk Lick Township Bedford County and surveyed the first day of June 1791 in pursuance of a warrant dated the 21st day of February 1785.

Per Alexander McClean Deputy —

Dan! Brodhead Esq. S. Gen!

IN TESTIMONY that the above is a copy of the original remaining on file in the Department of Internal Affairs of Pennsylvania, made conformably to an Act of Assembly approved the 16th day of February, 1833, I have hereunto set my Hand and caused the Seal of said Department to be affixed at Harrisburg, this fifteenth day of May 1906.

Leaon J. Brown
Secretary of Internal Affairs.